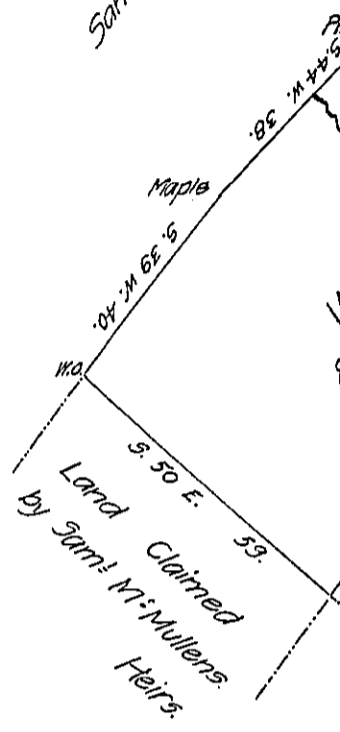


Samuel Lauthers. C 7



Situate  
 and five per cent  
 veyed the 30<sup>th</sup>  
 to William Er  
  
 To J. M. Campbell  
 Surveyor Gen

Huntingdon County.  
 Thomas Evans.  
 5A & 105<sup>p</sup> & all.

IN TESTIMONY

Accepted 5 Sept. 1854.